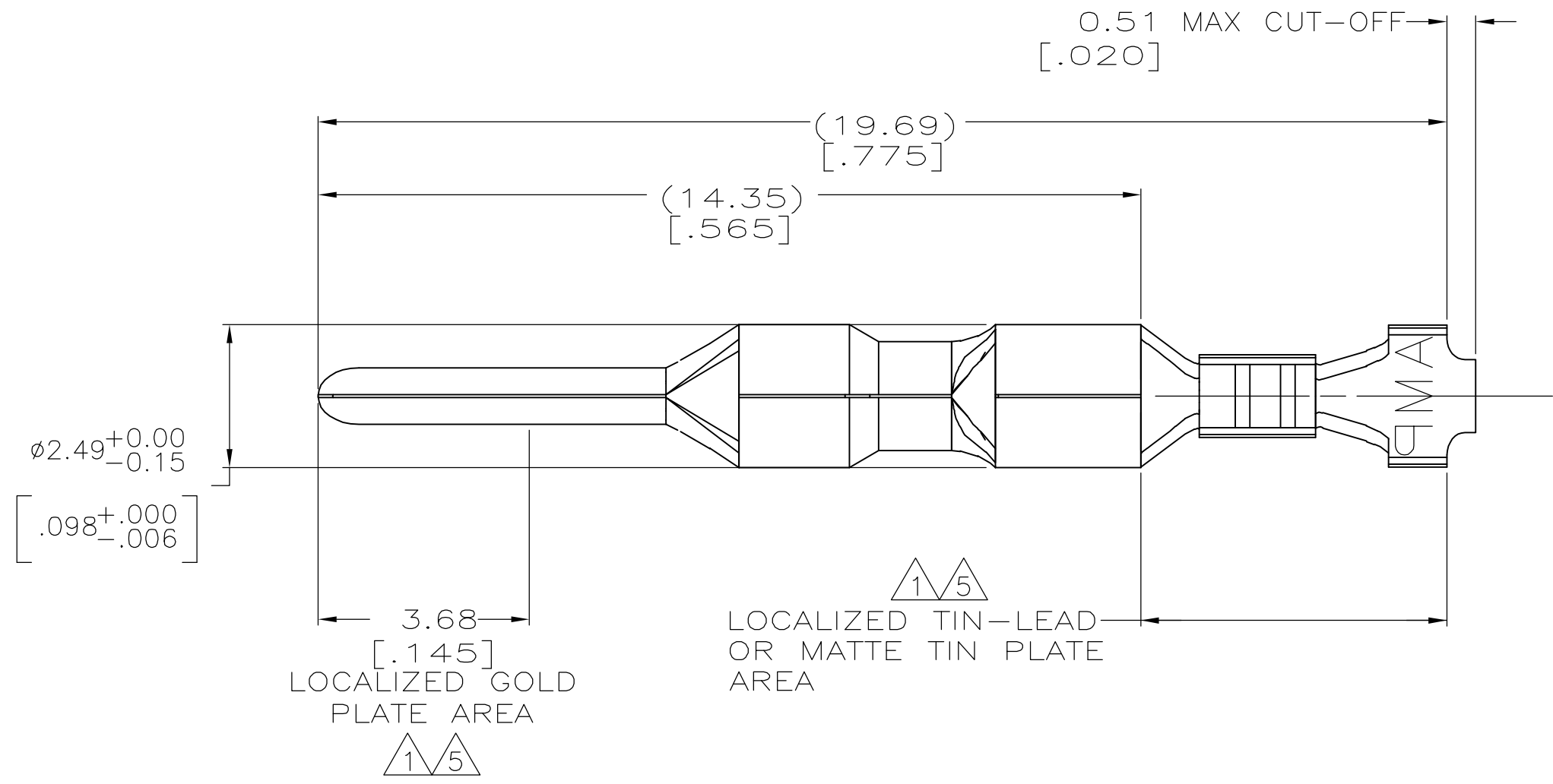
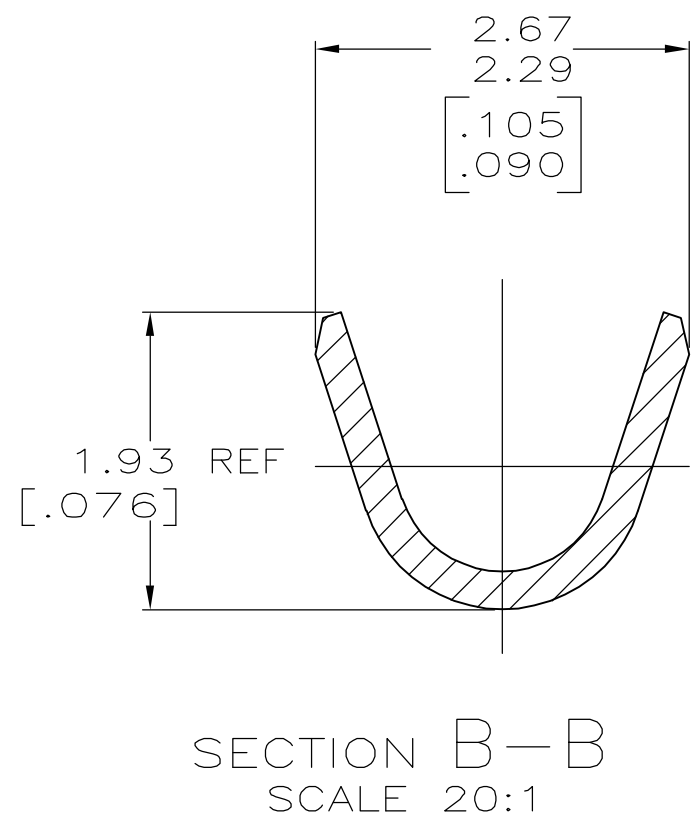
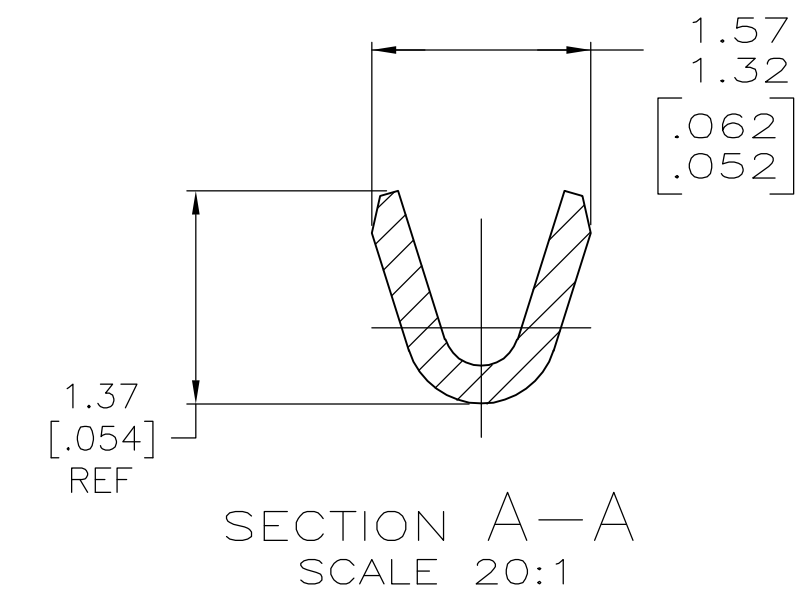
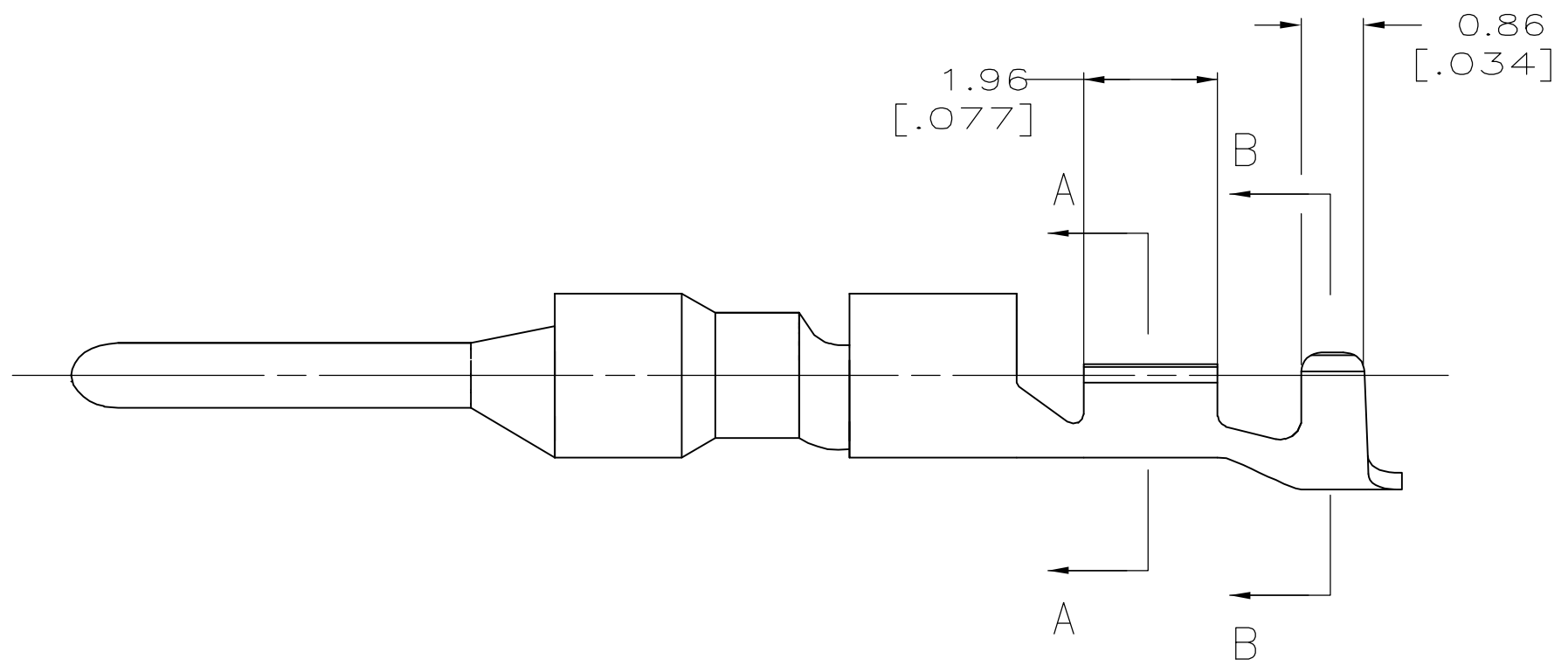


THIS DRAWING IS UNPUBLISHED. RELEASED FOR PUBLICATION  
 © COPYRIGHT BY TYCO ELECTRONICS CORPORATION. ALL RIGHTS RESERVED.

LOC	DIST	REVISIONS					
CM	0	P	LTR	DESCRIPTION	DATE	DWN	APVD
		D		REVISED PER 0G3B-0237-05	9/20/05	SS	CJ



- ① 0.00076 [0.000030] MIN GOLD IN LOCALIZED GOLD PLATE AREA AND 0.00254 [0.000100] MIN BRIGHT TIN-LEAD IN LOCALIZED TIN-LEAD PLATE AREA OVER 0.0013 [0.000050] MIN NICKEL.
- 2. WIRE RANGE: 0.05 - 0.15MM<sup>2</sup> (30-26 AWG).
- 3. INSULATION RANGE: 0.89-1.27[0.035-.050] DIA.
- 4. DIMENSIONS IN BRACKETS ARE IN INCHES.
- ⑤ 0.00076 [0.000030] MIN GOLD IN LOCALIZED GOLD PLATE AREA AND 0.00254 [0.000100] MIN MATTE TIN IN LOCALIZED TIN PLATE AREA OVER 0.0013 [0.000050] MIN NICKEL.



⑤	0.25[0.010] BRASS	1-794224-0
①	0.25[0.010] BRASS	794224-3
PRE-TIN	0.25[0.010] BRASS	794224-1
MATERIAL	MATERIAL	PART NUMBER

THIS DRAWING IS A CONTROLLED DOCUMENT.

DIMENSIONS: mm [INCHES]	TOLERANCES UNLESS OTHERWISE SPECIFIED: 0 PLC ± - 1 PLC ± - 2 PLC ± - 3 PLC ± 0.15 [0.006] 4 PLC ± - ANGLES ± - FINISH	DWN R. VESTAL 1-15-97 CHK R. SWING 1-15-97 APVD - PRODUCT SPEC - APPLICATION SPEC - WEIGHT -	<b>tyco</b> <b>Electronics</b> Tyco Electronics Corporation Harrisburg, PA 17105-3608	
MATERIAL SEE TABLE	SEE TABLE	CUSTOMER DRAWING	SIZE A2	CAGE CODE 00779
			DRAWING NO C=794224	RESTRICTED TO -
			SCALE 10:1	SHEET 1 of 1
			REV D	

794224